

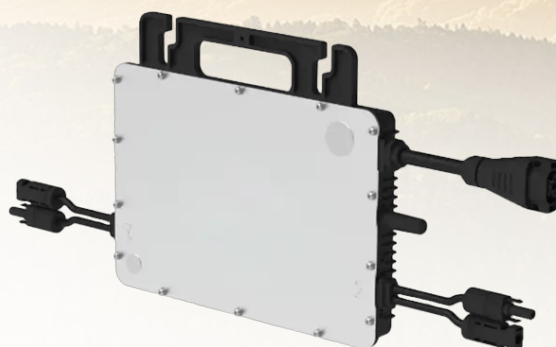
# 0-2Kw Single-phase micro inverter

Model: HJ-MG0003-W    Power: 0-2Kw

## Summary

---

HJ-MG0003-W output power up to 500VA-2000VA, with component-level MPPT and data monitoring function, higher power generation, more convenient operation and maintenance. The new Sub-1G wireless communication solution enables the product to realize more stable communication under various environmental conditions. More convenient installation and lower cost.



*0-2Kw Single-phase micro inverter (HJ-MG0003-W)*

## Product Features

---

High power

High power micro inverter, output power up to 2000VA.

High efficiency



Component-level MPPT and data monitoring, higher power generation and simpler operation and maintenance.

Reactive power compensation

With reactive power compensation function, in line with NB/T 32004-2018 standard.

High safety

Meets the most stringent North American fast shutdown requirements, safer to be applied to rooftop power stations.



## Technical Parameters

---

### Product Parameters HJ-MG0003-W (500W)

<b>Model Number</b>	<b>HJ-MG0003-W (500W)</b>
<b>Input (DC)</b>	
<b>Suitable Array Power (W)</b>	<b>360~600+</b>
<b>Max Input Voltage (V)</b>	<b>65</b>
<b>MPPT Voltage Range (V)</b>	<b>16*60</b>
<b>Start-up Voltage (V)</b>	<b>22</b>
<b>Max Input Current (A)</b>	<b>15</b>
<b>Max Input Short-Circuit Current (A)</b>	<b>25</b>
<b>Number of MPPTs</b>	<b>1</b>
<b>Max Input Route per MPPT</b>	<b>1</b>
<b>Output (AC)</b>	
<b>Rated Output Power (VA)</b>	<b>450</b>
<b>Rated Output Current (A)</b>	<b>2.05</b>
<b>Output Voltage Range (V)</b>	<b>220/180*275</b>
<b>Rated Frequency Range (Hz)</b>	<b>50/45*55</b>
<b>Adjustable Power Factor (Rated Power)</b>	<b>&gt;0.99 Default 0.8 ahead...0.8 behind</b>



## Total Harmonic Distortion (Rated Power)

## Application

---

Rooftop power station, balcony photovoltaic

## Contact Us

---

For catalog requests, pricing, or partnerships, please visit:  
<https://www.highjoule.com>



Scan QR Code  
Visit Our Website