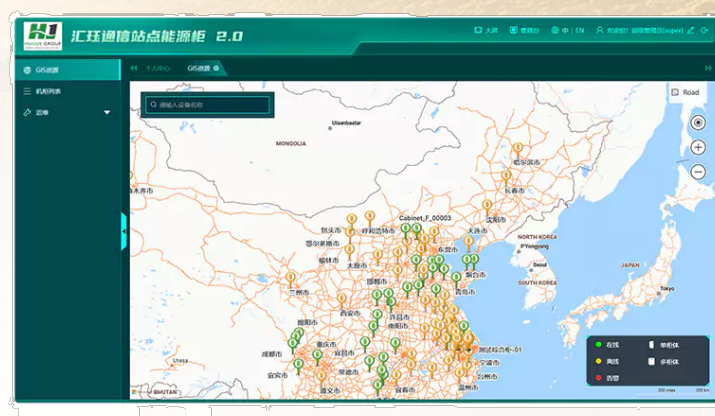


Communication site energy cabinet management system

Model: HJ-CS-ECMS V2.0 Power:

Summary

The Energy Cabinet Management System for Communication Sites is an important application of the Huijue EMS Energy Management System in the field of communication sites, specializing in the management of energy cabinets in communication sites.



Communication site energy cabinet management system (HJ-CS-ECMS V2.0)

Product Features

Resource Integration

The power equipment such as UPS, power distribution units, batteries, etc., as well as energy sources such as photovoltaic, utility power, etc., security equipment, environmental equipment and other equipment resources in the energy cabinet of

the communication site are unified and integrated to break the information silo and realize the cooperative work and information sharing among the equipment.

Intelligent Monitoring

With real-time data acquisition and monitoring functions, it can accurately monitor the operating parameters of the equipment in the energy cabinet, such as voltage, current, temperature, etc., track and analyze the operating status of the equipment 24 hours a day, discover abnormalities promptly, and issue an alarm.

Intelligent scheduling

According to the load conditions of different communication sites, energy supply conditions, and other factors, it automatically carries out intelligent scheduling, reasonably allocates power resources, optimizes energy utilization efficiency, and reduces operating costs.

High reliability

It adopts a redundant design and highly reliable hardware equipment, with strong anti-interference ability and stability, and is able to adapt to the complex electromagnetic environment and harsh climatic conditions of communication sites, providing a strong guarantee for the stable operation of the communication network.

Technical Parameters

Basic Function

Centralized management of integrated power supply cabinets in communication sites, and display of geographic data.

Monitoring screen: global situation at a glance

Equipment monitoring: real-time visibility of integrated power cabinet indicators

Fault alarms: timely response to equipment abnormalities

Operation and maintenance can check the equipment's running status

Application

Mainly used in various communication sites, including base stations, data centers, communication hubs, etc.

Contact Us

For catalog requests, pricing, or partnerships, please visit:
<https://www.highjoule.com>



Scan QR Code
Visit Our Website